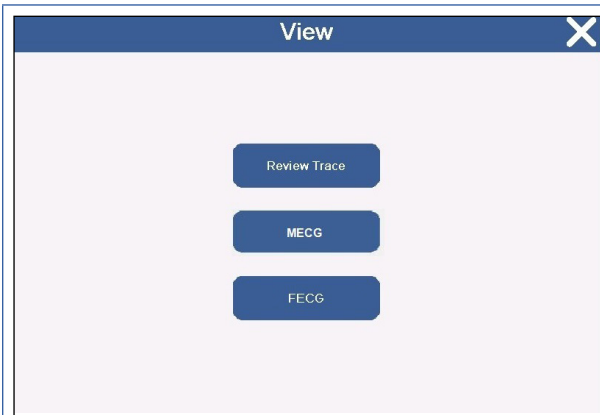





Team3

Using Fetal ECG (FECG)

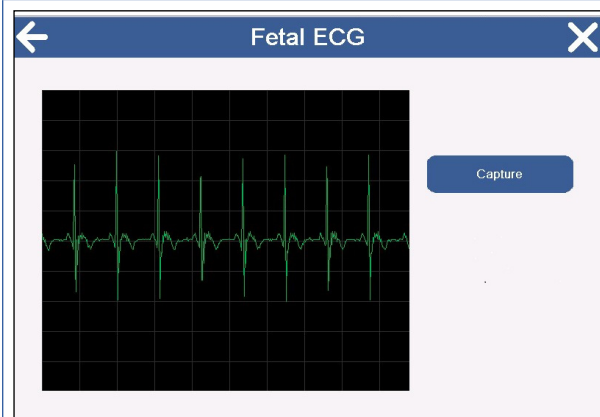


Touch the  icon to access the View Menu settings.
Select FECG.



The FECG screen displays a trace from the Fetal ECG that is plugged in.

Example shown of an FECG screen trace displayed when it is searching for the fetal heart rate and has not yet established a connection.



Example shown of an FECG screen trace displayed when it has found the fetal heart rate and established a connection.

Touch  to freeze the screen to view the trace.

Touch  to restart the trace.

Note

FECG, MECG sub menu buttons will only be displayed in Intrapartum models and only if probes are attached.